



# Virtual User Group: Leveraging Workfront in Healthcare

Tuesday, August 18, 2020

Today's Host



## Kate McGuinness

Strategic Customer Success Manager  
Workfront

# Agenda (ET)

11:00 a.m. Welcome and Agenda

11:10 a.m. Workfront and Signant Health

*Jeffrey Thell, Director, Business Transformation & Jeremy Inman,  
Application Developer, Information Technology*

11:30 a.m. Workfront and OptumRX

*Kait Winchell, Sr. Marketing Operations Manager*

11:50 a.m. Group Discussion

12:20 p.m. Wrap-up Next Steps

12:30 p.m. Event Ends



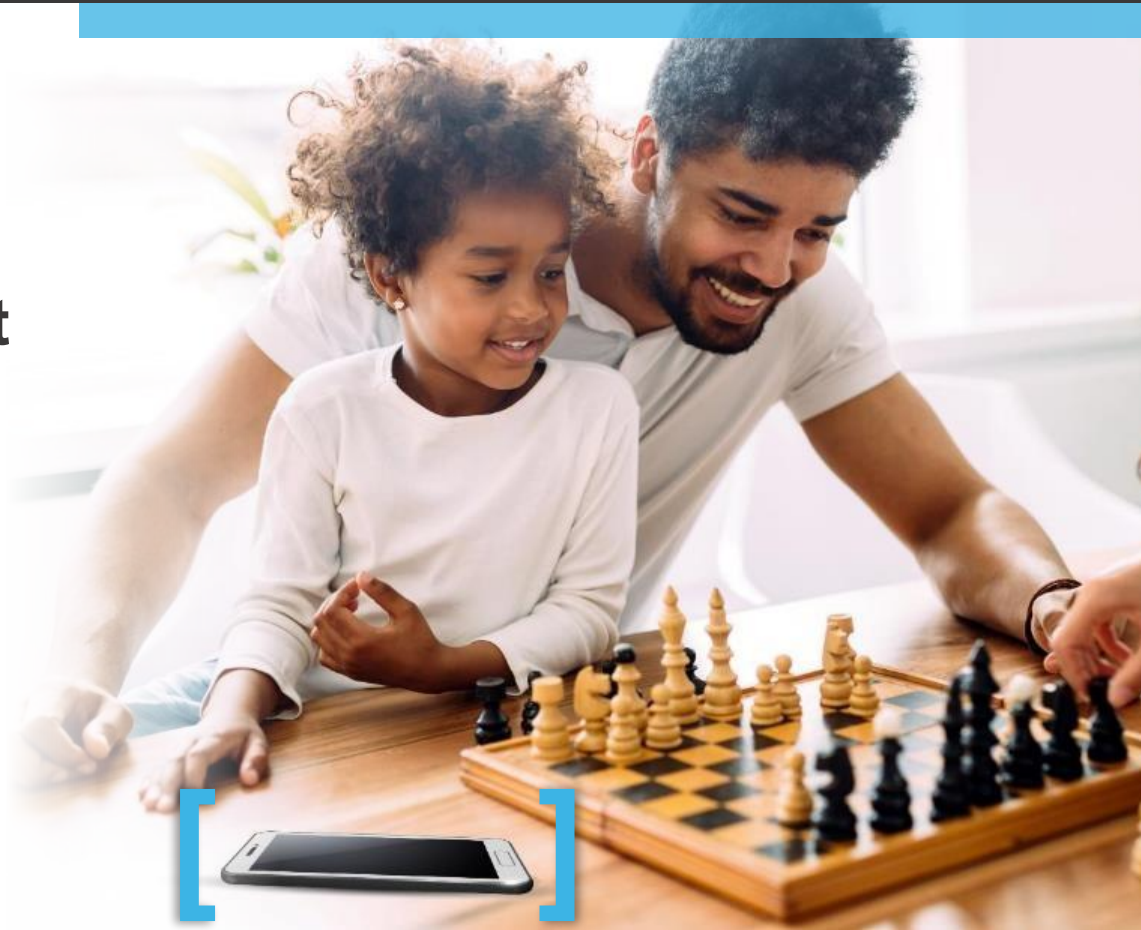
HOW CAN WE HELP YOU?

# Workfront and Signant Health – Project Delivery for the Life Sciences

18-Aug-2020

**Jeff Thell**  
Director, Business  
Transformation

**Jeremy Inman**  
Application Developer,  
Information Technology



# Agenda

- Overview of Signant Health
- Signant Health's journey with Workfront
- Leveraging Workfront in the Life Sciences
  - Demand management
  - Project framework and standards
  - Project delivery and customer communications
  - Resourcing and financial oversight
- System integration
- Questions



## Overview of Signant Health

---



**BECAUSE WHAT'S  
GOOD FOR YOUR  
PATIENTS IS GOOD  
FOR YOUR TRIAL**

## HOW CAN WE HELP YOU?

We bring together innovative technology, reliable logistics and scientific expertise to help patients provide the data quality your clinical research deserves



### PATIENT SOLUTIONS

TrialMax® eCOA
eConsent
Patient Engagement
Sensors & Wearables
eClinRO



### CLINICAL SUPPLIES

Rapid-Deploy IRT
SmartSupplies® Forecasting & Planning
SmartSupplies® Global Inventory Management



### ENDPOINT QUALITY

Data Quality Analytics
Rater Training
Clinician-Led Data Quality Monitoring
Scientific & Clinical Consulting

# WHAT MAKES US UNIQUE

## HOW CAN WE HELP YOUR PATIENTS SUCCEED?



### TECHNOLOGY INNOVATION

Accelerated our product development roadmap and **achieved unprecedented deployment speeds**



### SCIENCE TEAM

Expanded senior management with **proven industry leaders** and experienced **subject matter experts**



### UNIFIED SOLUTION

Blended teams and technology into the industry's most **comprehensive patient solutions platform**

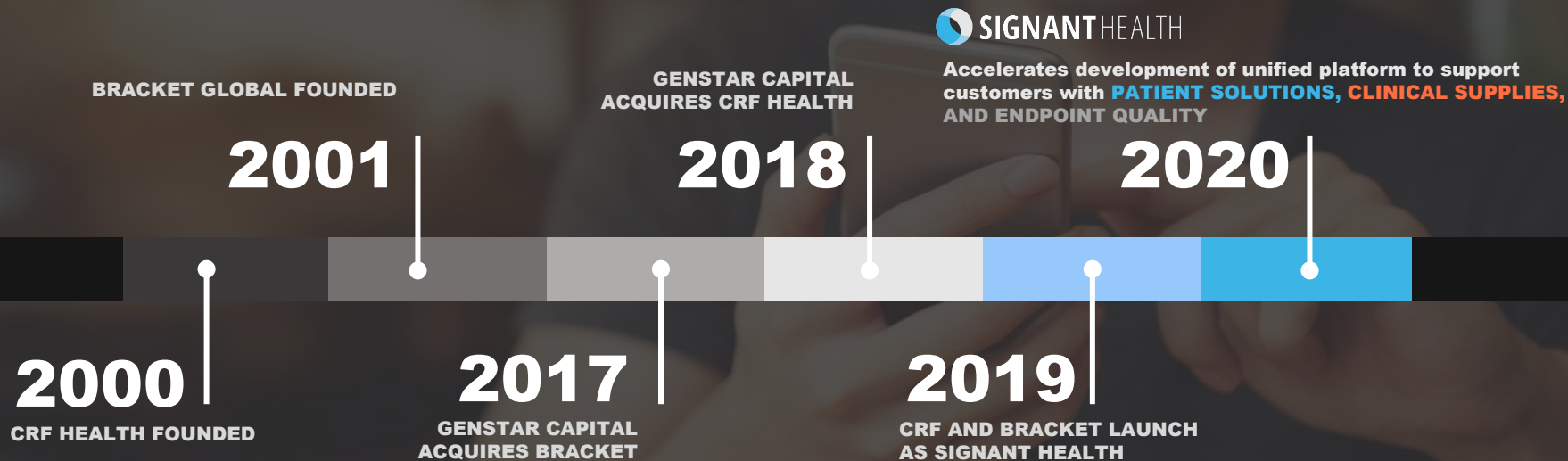


### GLOBAL OPERATIONS

Responsibly scaled up to improve **quality assurance** and **operational logistics** for global trials of all sizes



# HOW WE GOT HERE



## INVESTING IN CLINICAL RESEARCH TRANSFORMATION



Technology Innovation



Quality Assurance and  
Reliable Operations



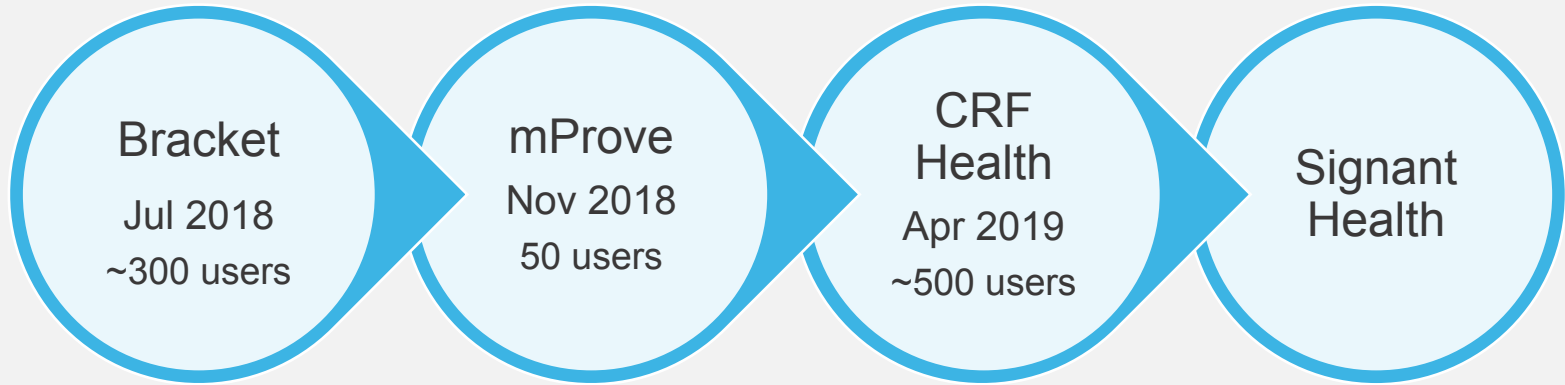
Global Scale and Support



## Signant Health's journey with Workfront

---

# Timeline of Workfront Implementations



Significant investment in partnership with Workfront

Rolled out to over 900 users over 1 year period

# Evolution and Growth

## Key developments and enhancements

- Use of project templates and custom forms
- Hours and cost capture at task level
- System integration and data warehousing
- Governance and Steering
- Executive Business Review with Workfront
- Collaboration on Workfront beta functionality

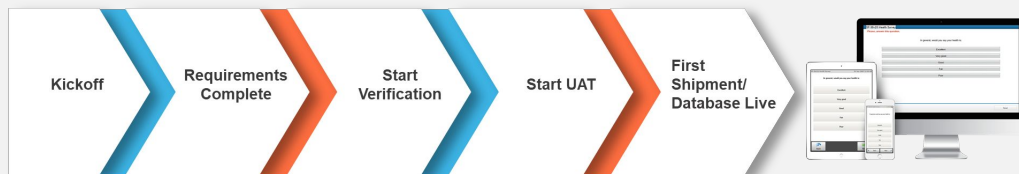
A photograph of an elderly couple sitting on a wooden bench outdoors, smiling and looking at each other. The image is overlaid with a semi-transparent orange filter. A white circle is positioned at the edge of the orange overlay, overlapping the white background.

## Leveraging Workfront in Healthcare and the Life Sciences

---

# General Best Practices

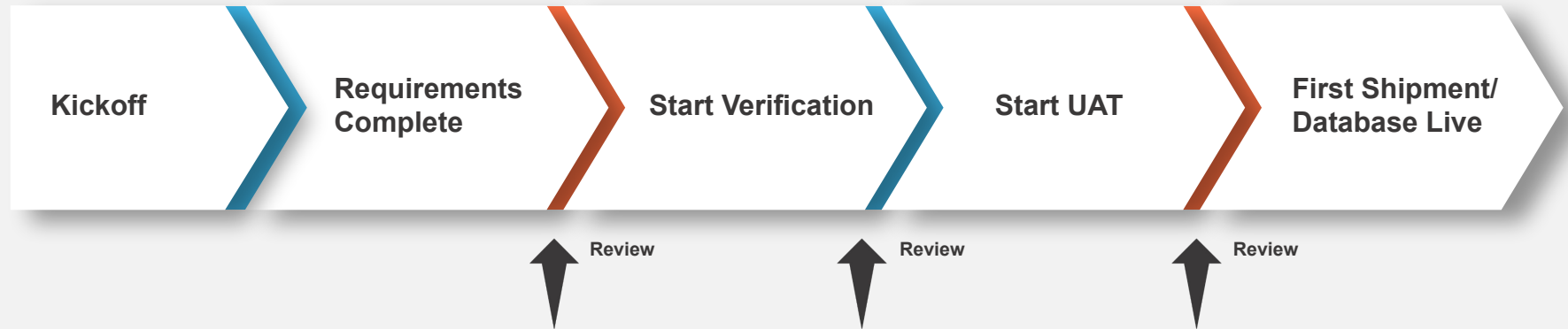
- Management of timelines and key milestones
  - Project plan standardization
  - Internal and external communication of project performance
  - Making and keeping commitments
- Task management
  - Driving accountability
  - Visibility to 'what comes next'
  - Capacity management and utilization
- Financial Management
  - Revenue recognition
  - Budget vs. Actual
  - Sales pipeline visibility



# Quality Management Oversight

## Benefits of iterative checks throughout startup:

- Identify and resolve quality issues earlier in the process
- Iterative checks require less time than a single, batched check at the end
- Reduced downstream impact (rework and delays)
- Quality Management involved from start to finish of startup phase





# Continuous Process Improvement

**Define**

**Measure**

**Analyze**

**Improve**

**Control**

- Establish baseline performance
- Analyze current state
- Run live pilots or conduct A/B testing
- Measure impact of improvements





## System Integration

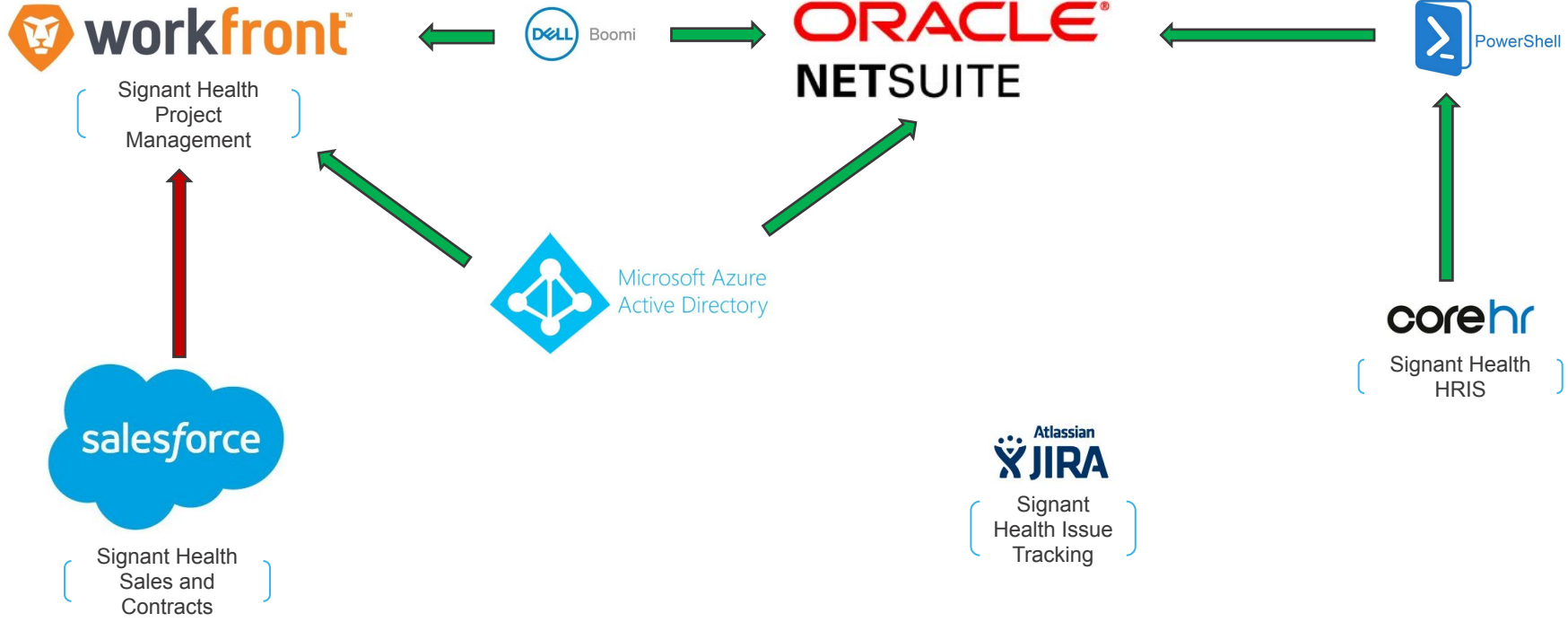
---

# Core Business Systems

What are our core business systems?

- Salesforce – Primary system for leads, contracts, pipeline and other sales activity
- Workfront – Primary system for Business Operations and Project Management
- NetSuite – Primary system for Financial Operations
- Jira – Primary system for Research and Development
- Dell Boomi – Primary Integration Platform
- PeopleHub – Primary system for Human Resources

Automated   
Manual 



# What data is transferred?

- Employee Data from PeopleHub to multiple systems including Workfront
  - Automates User Creation, Updates, and Access Deactivation
- Workfront Program, Project, and Project Task Data to NetSuite
  - Project information is required in NetSuite and we must pass multiple data points
- Project Budget Data from NetSuite to Workfront
  - Budget Data is on the signed Contract that Finance enters into NetSuite
- Item List from NetSuite to Workfront
  - Item master is in NetSuite and Dell Boomi pushes the list to a custom list in Workfront
- Time Tracking Data from Workfront to NetSuite
  - Revenue Recognized Hour Creation, Updates, and Deletions must transfer over to NetSuite

*Questions?*

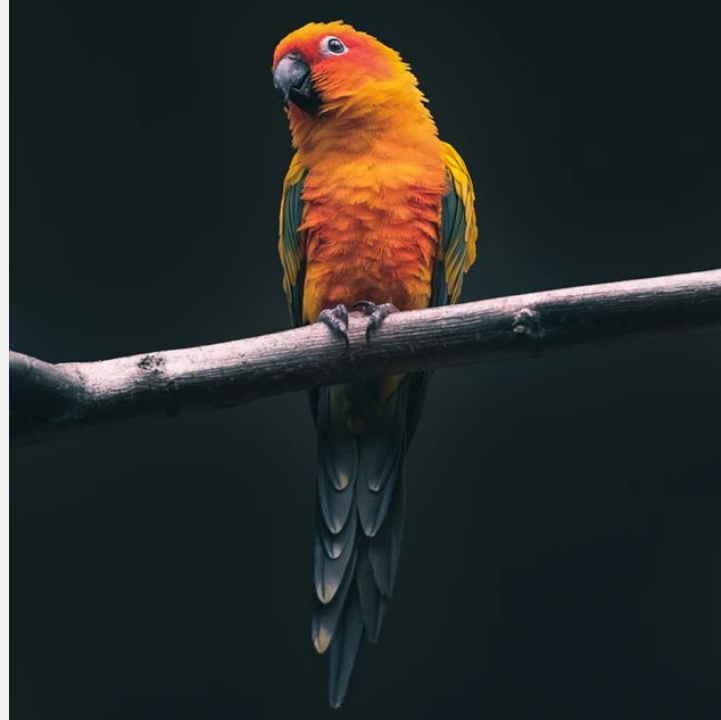
*Comments?*

# THANK YOU



# “Birds of a Feather” Group Discussions

- How do you use Workfront within your organization?
- What questions do you have for others who are using Workfront in Healthcare?







## Wrap-up and Next Steps



# Continue the Conversation on Workfront One

- Collaborate with others in a similar industry or department
- Harness the power of your peers to crowdsource inspiration and solutions
- Learn about upcoming events

**workfront ONE** Search... Kristin Farwell

[Home](#) [Getting Started](#) [Resources](#) [New Workfront Experience](#) [Collaboration](#) [Events](#) [Support](#) [My Experience](#) [Call Customer Support: 844-306-4357](#)

Welcome Workfront Customers and Partners!  
Explore the tabs below to check out our featured content to help you do your best work, find what's popular with other users, read the latest news, and find out what this site is all about.

[Featured](#) [Popular](#) [News](#) [About](#)

### Take advantage of Virtual Leap

More than 75 sessions available to help you do your best work with Workfront.

[Register today](#)

### The new Workfront experience

Now that the new Workfront experience is out of beta, see the resources we have to help you transition.

[Learn more](#)

### Join the Community

Ask questions, share knowledge, make connections on the Workfront One Community.

[See the latest discussions](#)

### Network with Workfront Users

We have 8 special edition Leap User groups for you to learn and connect with other Workfront users the week following Virtual Leap.

[See all 8 topics](#)

**Community Discussions**

Question  Poll

What would you like to know? [Ask](#)

Sort by: Latest Posts

For the Love of Pets  
Workboldy · Kristin Farwell · June 8, 2020 at 7:50 AM 100 2 11

**Product updates**

**What's new in Workfront**  
[2020.2 release overview](#) (new in Production)  
[2020.3 release overview](#) (new in Preview)

**What's new in Workfront Library**  
[Workfront Library release activity](#)

Discover the new features in the new experience

## Virtual User Groups - Summer / Fall 2020

[one.workfront.com/events](https://one.workfront.com/events)

- Aug 25: Change Management & the new Workfront Experience
- Sept 15: Agile in Marketing
- Sept 29: System Admin Best Practices

*Coming soon!*

- *Governance in Workfront*
- *Connecting Strategy to Delivery*





## Dive deeper into Leap!

- Over the coming weeks many of our fantastic Leap speakers will be starting a thread on the Community where you can ask them any questions about their sessions.
- Visit the “All Discussions” group regularly over the coming weeks to see that latest conversations!

**Thank you.**

**workfront**<sup>®</sup>